

AP Drawing Portfolio

Hadley McDonald

2021



Image 1

Sustained Investigation

Height: 5.5 inches

Width: 5.5 inches

Material(s): 0.7mm HB #2 Pencil
5.5 x 5.5 Sketchbook

Process(es): I begin by shading the figure from darkest to lightest and then labeling them to reference later.



Image 2

Sustained Investigation

Height: 5.5 inches

Width: 5.5 inches

Material(s): 0.7mm HB #2 Pencil
5.5 x 5.5 Sketchbook

Process(es): A practice sketch of a full-figure: it is more focused on the body itself rather than the face.

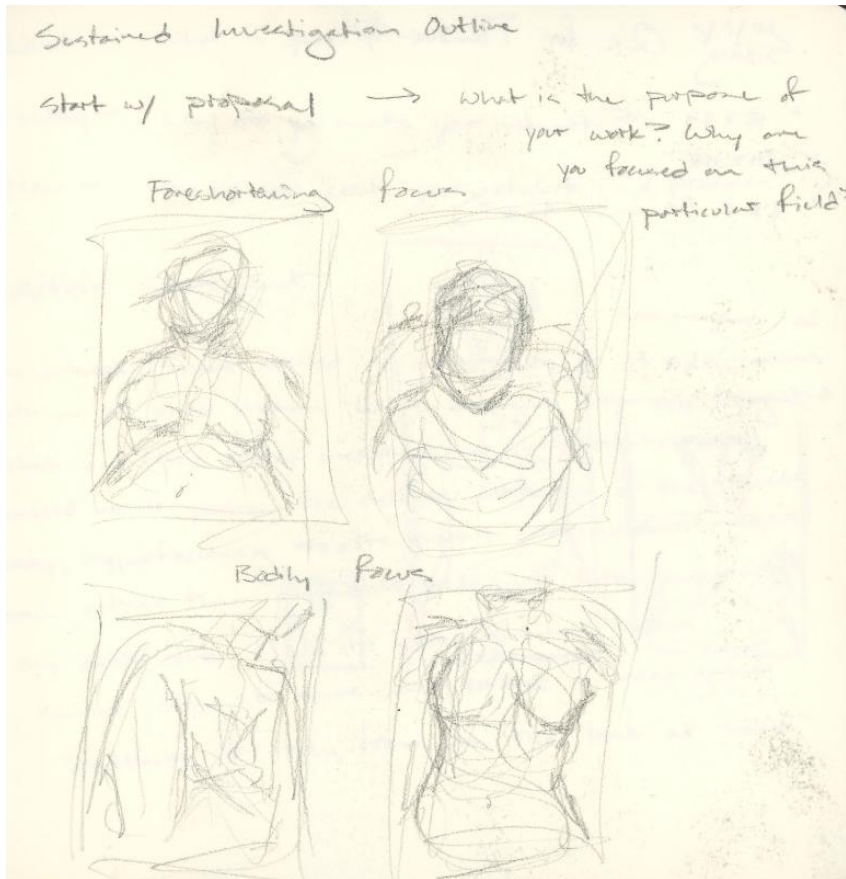


Image 3

Sustained Investigation

Height: 5.5 inches

Width: 5.5 inches

Material(s): 0.7mm HB #2 Pencil
5.5 x 5.5 Sketchbook

Process(es): This serves as a layout for my selected works and I was testing out different positions for them.

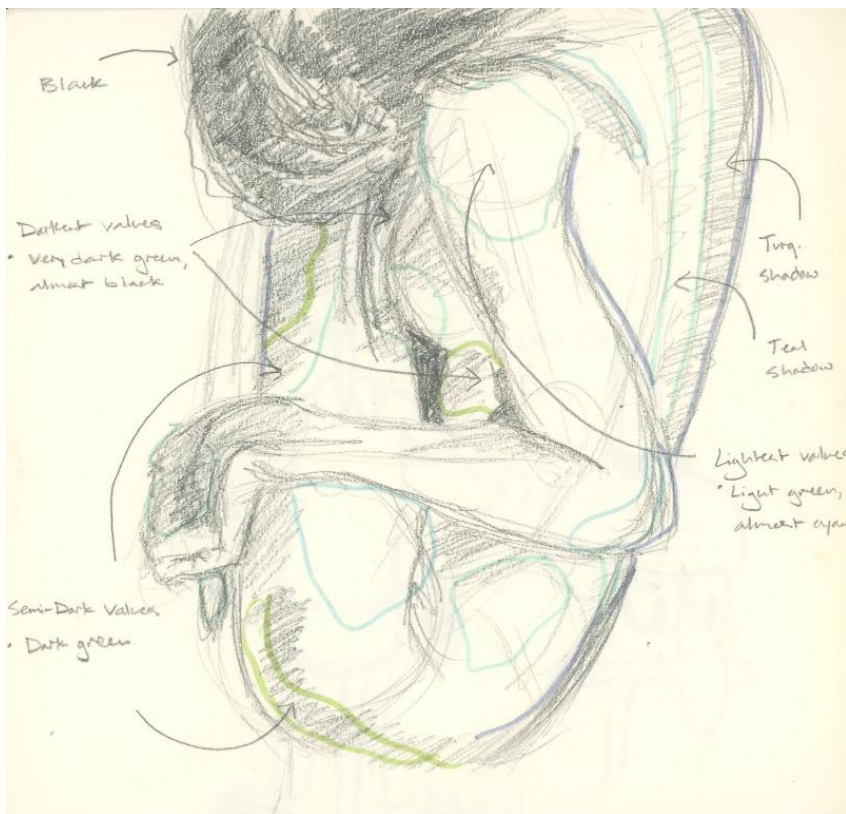


Image 4

Sustained Investigation

Height: 5.5 inches

Width: 5.5 inches

Material(s): 0.7mm HB #2 Pencil
Zebra Mildliner in Blue, Light Blue, Teal, and Green
5.5 x 5.5 Sketchbook

Process(es): I begin sketching a figure and using highlighters from the lightest to darkest hue to show values.

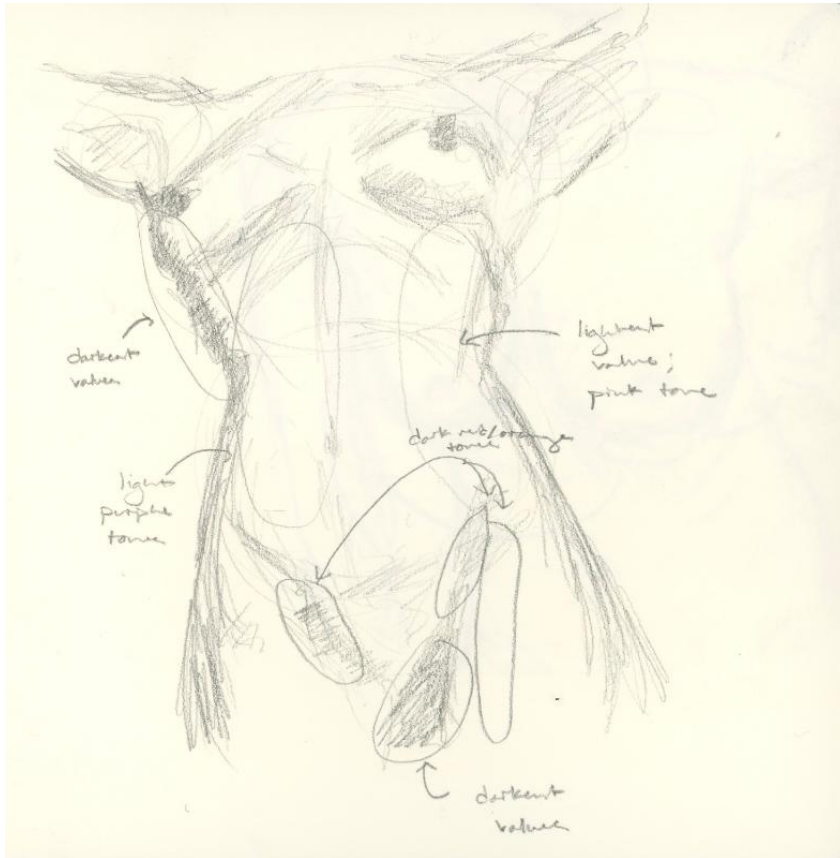


Image 5

Sustained Investigation

Height: 5.5 inches

Width: 5.5 inches

Material(s): 0.7mm HB #2 Pencil
5.5 x 5.5 Sketchbook

Process(es): Starting with a sketch of a figure, I begin mapping out the most important values of the piece.

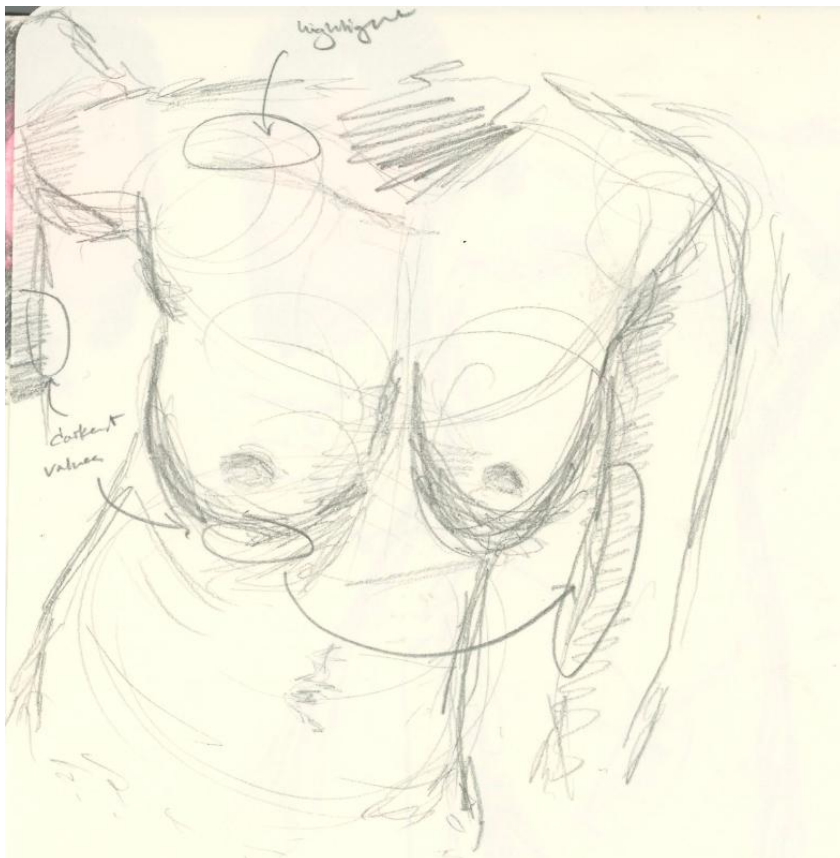


Image 6

Sustained Investigation

Height: 5.5 inches

Width: 5.5 inches

Material(s): 0.7mm HB #2 Pencil
5.5 x 5.5 Sketchbook

Process(es): In order to practice different perspectives, I sketched out a figure while briefly labeling parts.



Image 7

Sustained Investigation

Height: 5.5 inches

Width: 3.5 inches

Material(s): 0.7mm HB #2 Pencil
Zebra Mildliner in Pink
5.5 x 3.5 Sketchbook

Process(es): First study out of two: a close-up from a different angle to test myself and a different background.



Image 8

Sustained Investigation

Height: 5.5 inches

Width: 3.5 inches

Material(s): 0.7mm HB #2 Pencil
Zebra Mildliner in Blue
5.5 x 3.5 Sketchbook

Process(es): First study out of two: a close-up from a different angle to test myself and a different background.

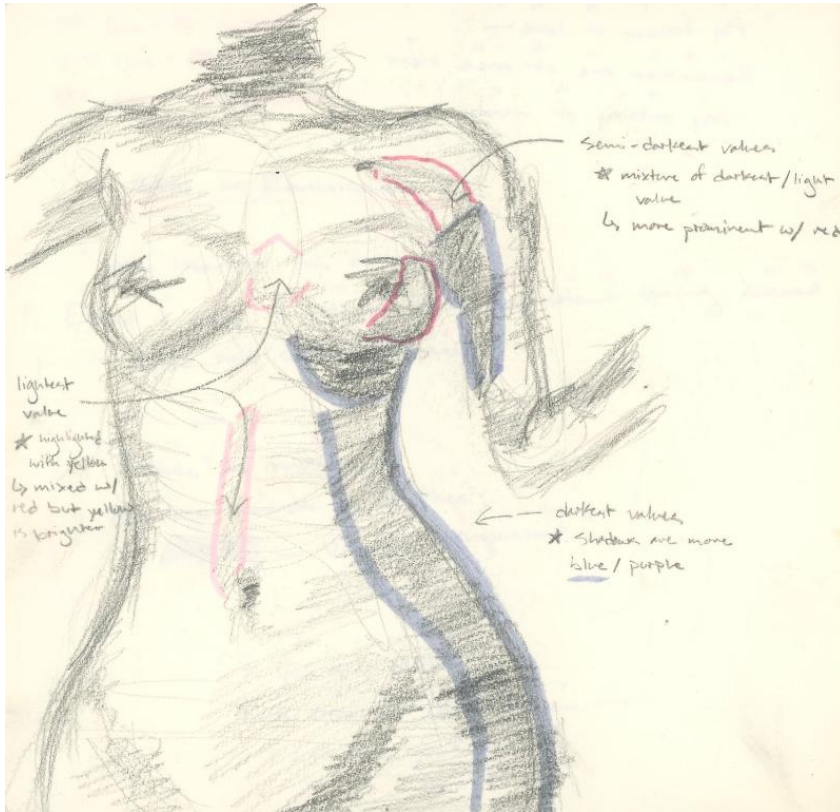


Image 9

Sustained Investigation

Height: 5.5 inches

Width: 5.5 inches

Material(s): 0.7mm HB #2 Pencil
Zebra Mildliner in Blue, Red, and Pink
5.5 x 5.5 Sketchbook

Process(es): I begin sketching a figure and using highlighters from the lightest to darkest hue to show values.

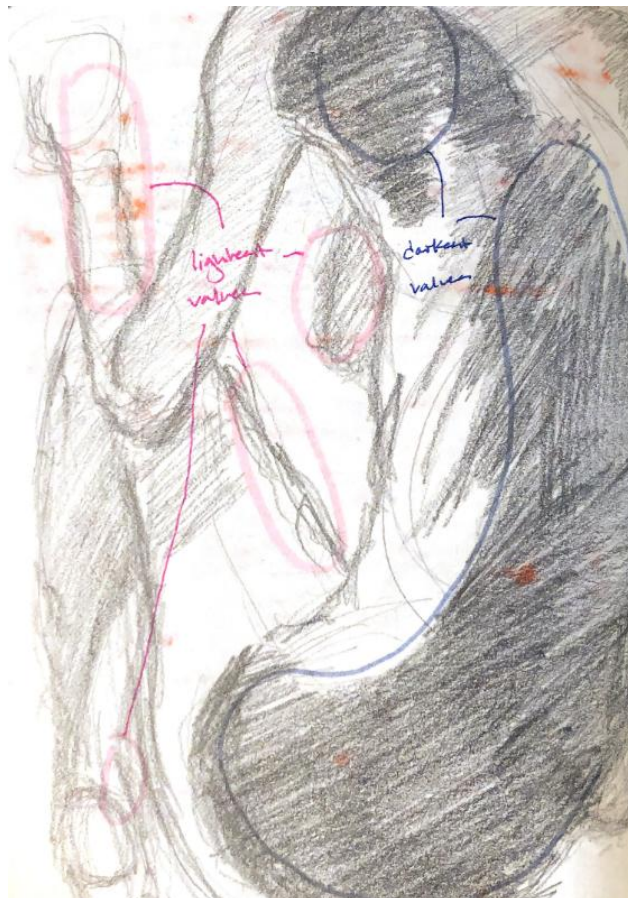


Image 10

Sustained Investigation

Height: 5.5 inches

Width: 3.5 inches

Material(s): 0.7mm HB #2 Pencil
Zebra Mildliner in Pink and Blue
5.5 x 3.5 Sketchbook

Process(es): I begin sketching a figure and using highlighters from the lightest to darkest hue to show values.



Image 11

Sustained Investigation

Height: 18 inches

Width: 24 inches

Material(s): 0.7mm #2 HB Pencil
Acrylic Paint
Water
Oil Paint
18 x 24 Canvas

Process(es): With diluted acrylic paint, I put down an underpainting, sketched a grid, and painted with oils.

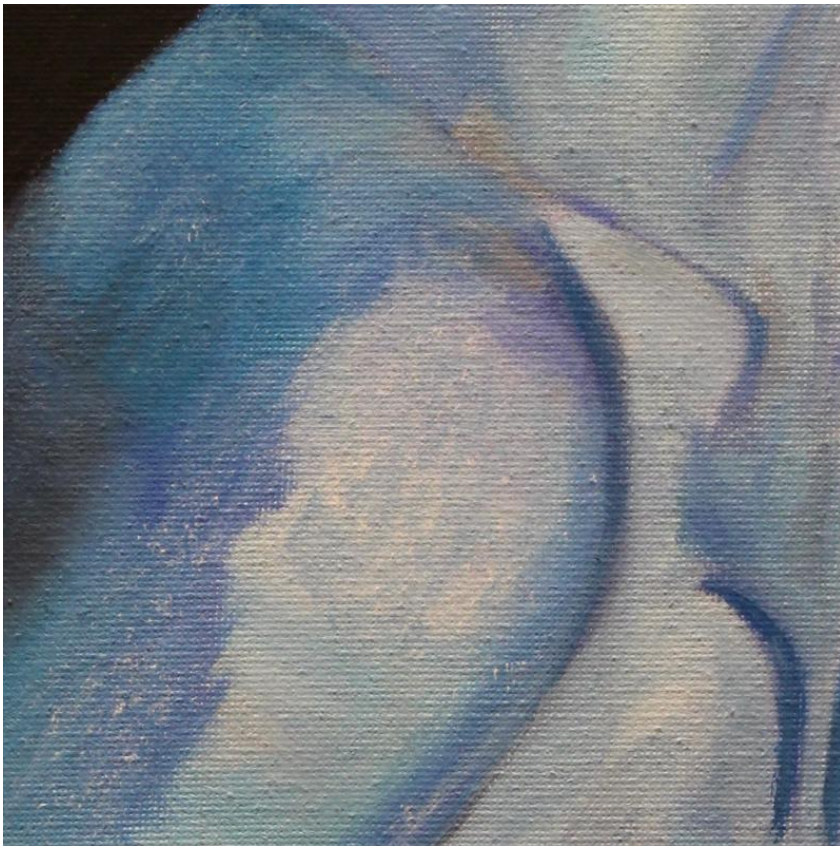


Image 12

Sustained Investigation

Height: 8 inches

Width: 10 inches

Material(s): 0.7mm #2 HB Pencil
Oil Paint
8 x 10 Canvas

Process(es): I sketched out grid using pencil on the canvas, and then I painted over it with oil paint.



Image 13

Sustained Investigation

Height: 14 inches

Width: 16 inches

Material(s): 0.7mm #2 HB Pencil
Oil Paint
14 x 16 Canvas

Process(es): I sketched out grid using pencil on the canvas, and then I painted over it with oil paint.



Image 14

Sustained Investigation

Height: 3 inches

Width: 3 inches

Material(s): 0.5mm #2 Pencil
Acrylic Paint
Oil Paint
3 x 3 Canvas

Process(es): I covered the canvas with black acrylic, sketched onto the canvas, and then painted over with oils.



Image 15

Sustained Investigation

Height: 8 inches

Width: 10 inches

Material(s): 0.5mm #2 Pencil
Acrylic Paint
Oil Paint
8 x 10 Canvas

Process(es): I covered the canvas with black acrylic, sketched onto the canvas, and then painted over with oils.

Written Evidence

Sustained Investigation

Identify the question(s) or inquiry that guided your sustained investigation.

Describe how your sustained investigation shows evidence of practice, experimentation, and revision guided by your question(s) or inquiry.

Response:

My investigation serves to explore the ideal physical body as well as appreciation for the female carcass; the utilization of different poses and blends of color is prevalent in my work as a means of projecting my personal dealings with body dysmorphia, where I cannot bear the flaws amongst the exterior, and how I shroud in guilt when I have these thoughts. The processes I uptake with my work requires drawing a grid in order to obtain complete accuracy to the prompt; symbolized perfection depicts the figures as accurately as possible, and my medium of oil paint resembles a type of slickness and a type of gentle touch when viewing it. Portraying different variations of color allude to the different thoughts and feelings I have when observing my body and viewing others I am envious of. Unnatural colors for bodily figures signify an unobtainable yet beautiful state of mind, an acceptance I have not personally delt with and, therefore, implores that yearn through the color wheel. Fixating on differing parts of the body has helped with the overall appreciation of the source; the appreciation for my own body, other female-presenting bodies, and the dire importance of self-acceptance.



Work 1

Selected Works

Height: 18 inches

Width: 24 inches

Idea(s): Looming over in dominance and use of vibrancy enacts a comforting aura and overall acceptance.

Material(s): 0.7mm #2 HB Pencil, Acrylic Paint, Water, Oil Paint, 18 x 24 Canvas.

Process(es): With diluted acrylic paint, I put down an underpainting, sketched a grid, and painted with oils.



Work 2

Selected Works

Height: 8 inches

Width: 10 inches

Idea(s): The portrayal of the attempt of being comforted: looking to the side results in yearn for purpose.

Material(s): 0.7mm #2 HB Pencil, Oil Paint, 8 x 10 Canvas.

Process(es): I sketched out grid using pencil on the canvas, and then I painted over it with oil paint.



Work 3

Selected Works

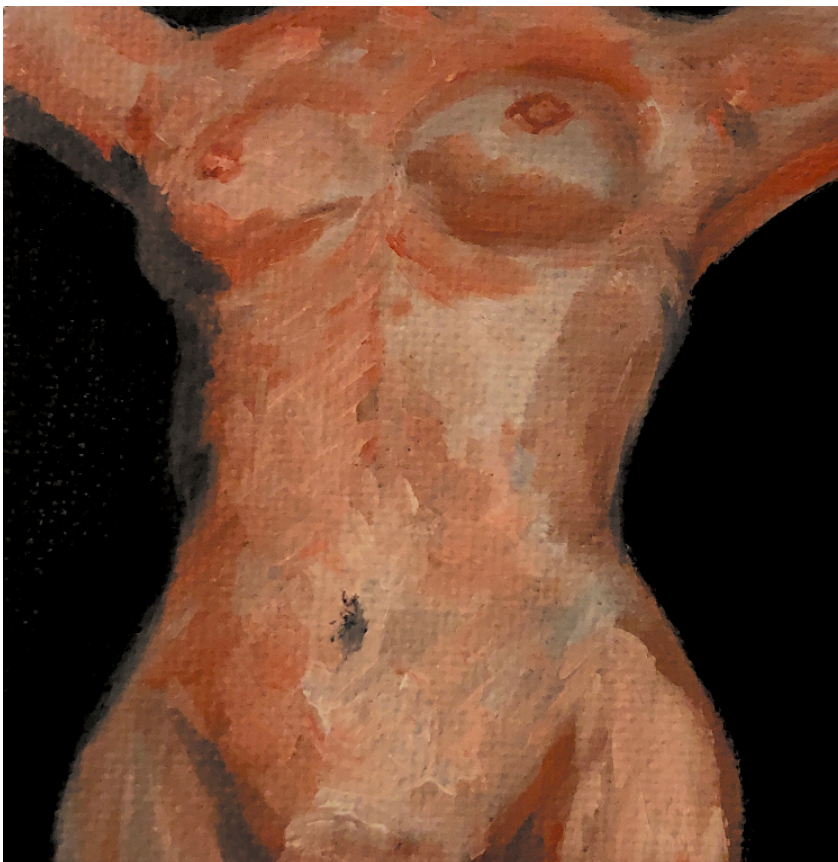
Height: 14 inches

Width: 16 inches

Idea(s): Facing the body head-on when not in a comfortable state evokes embarrassment, hence the "reddening."

Material(s): 0.7mm #2 HB Pencil, Oil Paint, 14 x 16 Canvas.

Process(es): I sketched out grid using pencil on the canvas, and then I painted over it with oil paint.



Work 4

Selected Works

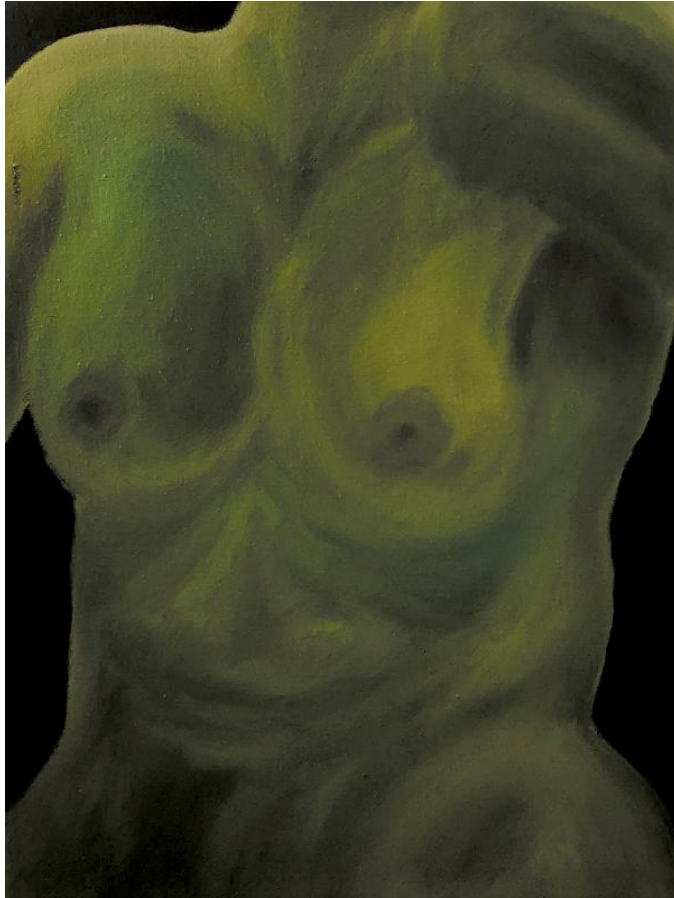
Height: 3 inches

Width: 3 inches

Idea(s): An outstretched motion with the body on full display is an intricate step towards true permanence.

Material(s): 0.5mm #2 Pencil, Acrylic Paint, Oil Paint, 3 x 3 Canvas.

Process(es): I covered the canvas with black acrylic, sketched onto the canvas, and then painted over with oils.



Work 5

Selected Works

Height: 8 inches

Width: 10 inches

Idea(s): In a hunched position is where all true feelings are explored, and determines a frail-like state.

Material(s): 0.5mm #2 Pencil, Acrylic Paint, Oil Paint, 8 x 10 Canvas.

Process(es): I covered the canvas with black acrylic, sketched onto the canvas, and then painted over with oils.